

Holiday Potholders

by Meredith McClanahan



Make these festive potholders to add with a cookie mix & spatula to give to a holiday party hostess or to decorate your own kitchen during the holiday season.

Shopping List:

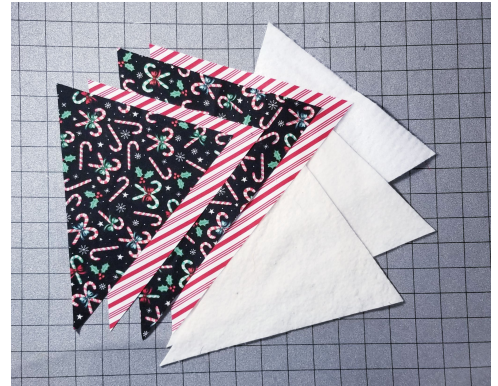
- HUSQVARNA VIKING[®] Sewing Machine
- Adjustable Bias Binder - Part #412985045
- Holiday Fabric
 - x2 - ¼ yard for Tree Potholder
 - x3 - ¼" yard for Ornament Potholder
- ⅓ yard warm & natural batting
- ⅓ yard Insul-Bright
- Coordinating Cotton Sewing Thread
- Marking Pen or Pencil
- Scissors
- Provided Pattern Pieces

*Optional:

- You'll need coordinating bias tape or you can make your own with the coordinating fabric for each potholder. Please see cutting instructions for measurement options.

Tree Potholder Cutting Instructions:

- Main Fabric:
 - X1 - Small Triangle
 - X1 - Large Triangle
- Coordinating Fabric:
 - x1 - Small Triangle
 - x1 - Large Triangle
 - Optional: Bias Tape ½" double fold 2 yds or 1 package
- Warm & Natural:
 - x1 - Small Triangle
 - x1 - Large Triangle
- Insul-Bright
 - x1 - Large Triangle



Ornament Potholder Cutting Instructions:

- Main Fabric:
 - x2 - Full Circles
- Coordinating Fabric 1:
 - x2 - Half Circles
- Optional: Coordinating Fabric 2:
 - Bias Tape ½" double fold 2 yds or 1 package
- Warm & Natural:
 - x1 - Full Circle
 - x1 - Half Circle
- Insul-Brite
 - x1 - Full Circle

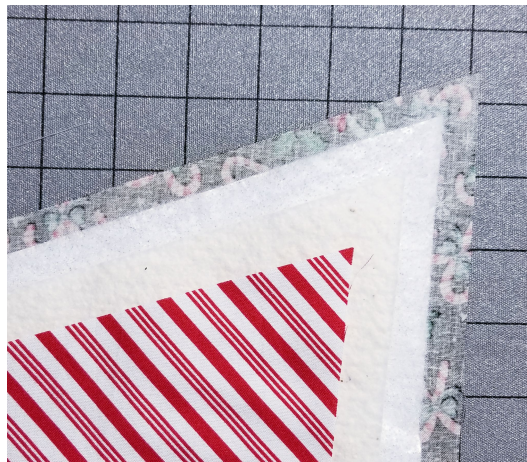


Tree Potholder Sewing Instructions:

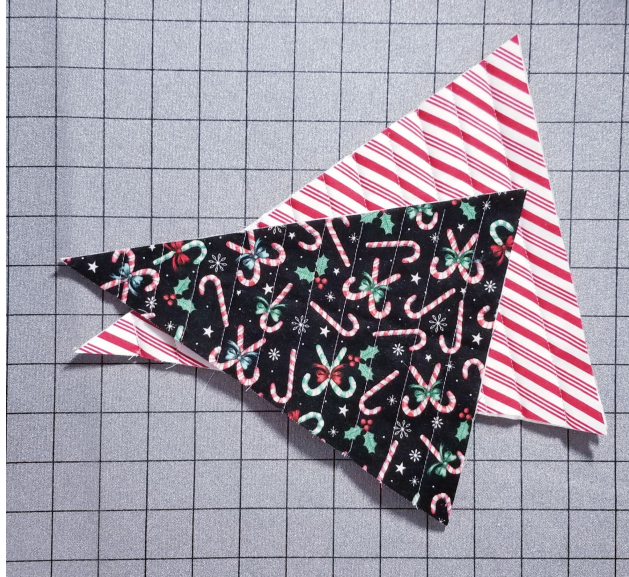
1. Pull out small triangle fabric pieces (main fabric, coordinating fabric & warm & natural).
2. Place the small coordinating fabric triangle right side down, place warm & natural down and then small main fabric triangle right side up together lining up all three sides. Clip or pin together.



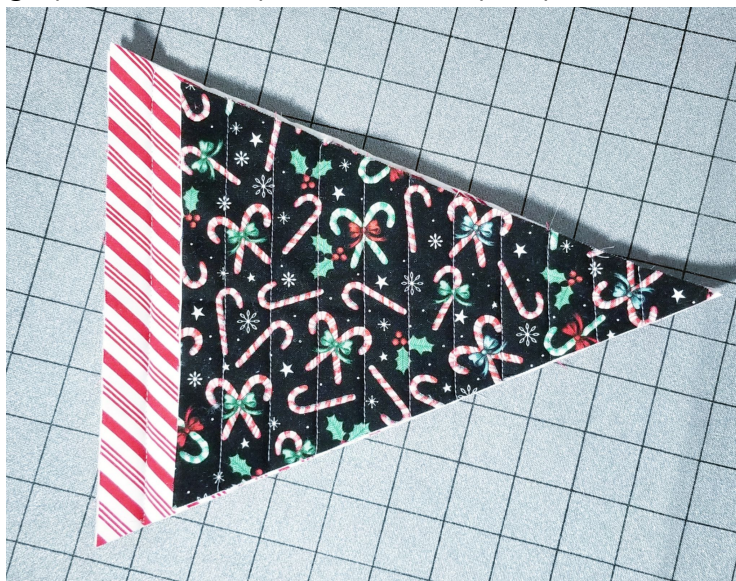
3. Pull out large triangle pieces (main fabric, coordinating fabric, warm & natural & insul-bright).
4. Place the large main fabric triangle right side down, place insul-bright down, place warm & natural down and then large coordinating fabric triangle right side up lining up all three sides. Clip or pin together.



5. Sew horizontal lines at your desired width all the way down the triangle piece sandwich.



6. Using the adjustable bias binder sew coordinating bias tape along the top short edge of the small fabric triangle sandwich.
7. Place the large triangle sandwich main fabric down.
8. Place the small triangle sandwich main fabric up on top of the large triangle sandwich lining up the bottom point. Pin or clip in place.



9. Cut a 6" strip of coordinating bias tape for hook loop.
10. Place the two raw edges of the bias loop in the center along the short side of the large triangle piece raw edge. Clip or pin in place.



11. Sew hook loop down to hold in place with a ¼" seam.



12. Place the bias tape along the edges of the triangle. Take your time to get precise corners when turning. Clip or pin in place.



13. Using a zigzag stitch sew down the bias tape being mindful to catch the back edge as well.



14. Finish bias tape ends in desired preference.

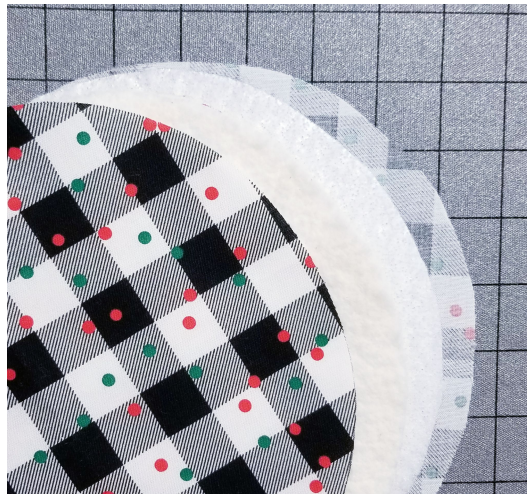


Ornament Potholder Sewing Instructions:

1. Pull out half circle fabric pieces (x2 coordinating fabric 1 & warm & natural).
2. Place one half circle right side down, place warm & natural down then the second half circle right side up lining up raw edges. Clip or pin in place.



3. Pull out full circle pieces (x2 main fabric, warm & natural & insul-bright).
4. Place one full circle right side down, place insul-bright down, then warm & natural & finally the second full circle right side up lining up raw edges. Clip or pin in place.



5. Sew cross hatch lines at your desired width all the way across the full circle sandwich & half circle sandwich.



6. Place the coordinating fabric 2 bias tape along the curved edge of the half circle. Clip or pin in place.
7. Sew coordinating fabric bias tape along the curved edge of the half circle sandwich using a zig zag stitch, being mindful to catch the back edge as well.



8. Place the large circle sandwich down.
9. Place the half circle sandwich on top of the full circle sandwich lining up the curved edge. Pin or clip in place.
10. Cut a 6" strip of coordinating fabric 2 bias tape for hook loop.

11. Place the two raw edges of the bias loop to the top center of the full circle sandwich along the raw edge. Clip or pin in place.



12. Sew hook loop down to hold in place with a $\frac{1}{4}$ " seam.
13. Place bias tape along the curve of the circle sandwich. Clip or pin in place.



14. Using a zigzag stitch sew down the bias tape being mindful to catch the back edge as well.



15. Finish bias tape ends in desired preference.

